

CHILE

DIGITAL WORLD

ANALOG WORLD

EMPLOYMENT REJECTION Direct temporal connection

Q1 - Narratives that sexualized migrant women and subjected them to symbolic violence.

Conversation increased by
6,400%

Q2 - Narratives about metro construction claiming "Chileans are being fired to hire migrants"

Q3 - Narrative framing foreigners as "cheap labor" and "easy to exploit."

Conversation increased by
1,932%

Q4 - Narrative portraying migrants as "cheap labor" (Electoral context).

Conversation increased by
1,175%

Q1  **6 in 10**

Returnee women reported job denials due to their appearance.

Returnees were denied jobs mainly for "being migrants or foreigners":

Q2  **8 in 10**

Q3  **5 in 10**

Q4  **5 in 10**

Lack of documentation was another reason for job denials. This points to challenges in migrant regularization for effective integration.

Q3- Perpetrators of acts of violence:
Employers: **33,5%**

DISCRIMINATION AND VIOLENCE Direct temporal connection

Q1 - Hostile narratives about George Harris's participation in Viña del Mar

Conversation increased by
2,636%

Q4 - Criminalizing narratives labeling migrants as "killers."

Conversation increased by
1,132%

Q1 - **48,9%** of returnees reported verbal violence.

Main aggressors:

- Residents
- Employers
- Security agents

Q4 - Most reported aggressions:

Mockery and insults **60,9%**
"Go back to Venezuela" **43,5%**
Physical violence **44,4%**

HEALTH STIGMATIZATION Independent narrative trend

Q2 - Narratives linking migrant women to HIV transmission, using zoophilic terms like "mona" "monkey"

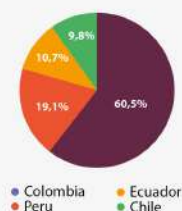
Conversation increased by
2,492%

Q3 - Narratives associating migrants with disease and filth, calling them "unsanitary" and "scum."

Conversation increased by
7,620%

GLOBAL CHARACTERIZATION DATA:

Returns by country



Age	
18 - 29 years	61,9%
30 - 45 years	30,5%
46 - 55 years	6,4%
+56 years	1,2%
Sex	
Men	76,1%
Women	24,4%

You can access the full report at
www.elbarometro.org
and www.odisef.org

Q* Quarters of 2025.

COLOMBIA

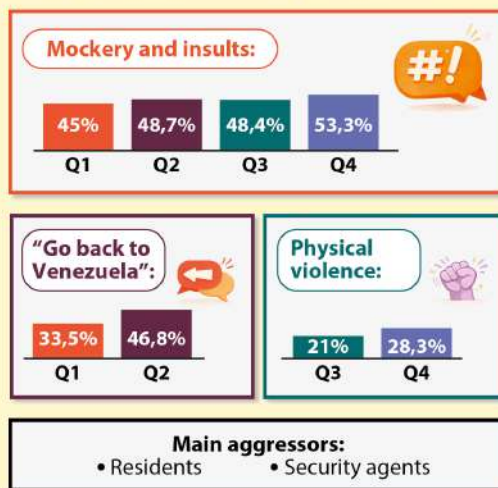
DIGITAL WORLD

ANALOG WORLD

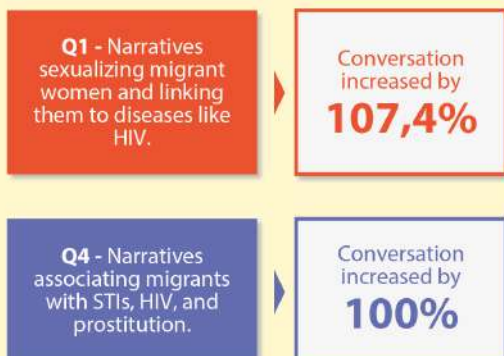
DISCRIMINATION AND VIOLENCE Direct temporal connection



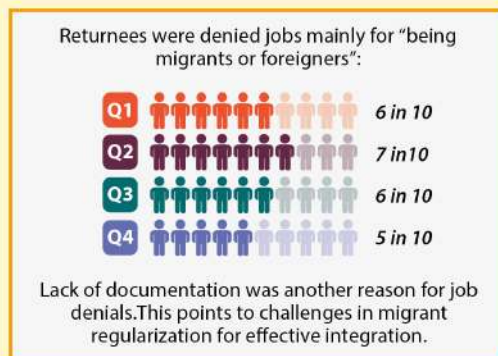
MOST REPORTED AGGRESSIONS BY RETURNEES:



HEALTH STIGMATIZATION Independent narrative trend

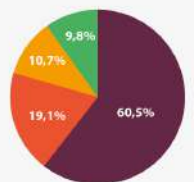


EMPLOYMENT REJECTION Indirect temporal connection



GLOBAL CHARACTERIZATION DATA:

Returns by country



Age	
18 - 29 years	61,9%
30 - 45 years	30,5%
46 - 55 years	6,4%
+56 years	1,2%
Sex	
Men	76,1%
Women	24,4%

You can access the full report at www.elbarometro.org and www.odisef.org

Q* Quarters of 2025.

DIGITAL WORLD

ANALOG WORLD

EMPLOYMENT REJECTION Direct temporal connection

Q1 -Candidates' electoral rhetoric promising mass expulsions, claiming Venezuelans "steal jobs" from Ecuadorians

Conversation increased by **2.680%**

Q2 - Narratives criminalizing delivery jobs, with news linking criminal gangs to "delivery driver" fronts

Conversation increased by **704%**

Q3 - Professional delegitimization narratives attacking university lecturers, accusing them of "fake degrees" or being "agitators."

Conversation increased by **3.757%**

Q4 - "Rottenness" narratives demanding institutions be "cleansed" of migrants

Conversation increased by **271%**

Durante todo el año:



Retornados reportó que se le negó trabajo por "ser migrante o extranjero".

Otras razones para negar trabajo fueron:

Falta de documentos:



Por su apariencia:



DISCRIMINATION AND VIOLENCE Direct temporal connection

Q3 - Scapegoat narratives accusing foreigners of vandalism and unrest during the National Strike.

Conversation increased by **2.423%**

Q3 - Criminalizing narratives about a police operation that reinforced the stigma of "bloodthirsty migrant" after a homicide

Conversation increased by **1.472%**

Q3 - Most reported aggressions:
Mockery and insults: 45,5%
"Go back to Venezuela": 30,3%

Q4 - Most reported aggressions:
Mockery and insults: 56,5%
Demand to return: 39,1%
Physical violence: 28,6%

Main aggressors in both quarters:
•Residents •Security agents

HEALTH STIGMATIZATION Independent narrative trend

Q2 - Sexualizing narratives linking migrant women to sexual exploitation and prostitution

Conversation increased by **840%**

Q2 - Narratives linking migrant women to HIV transmission and blaming them for hospital collapse

Q4 - Narratives linking migrant women to HIV transmission and accusing them of receiving priority healthcare

GLOBAL CHARACTERIZATION DATA:

Returns by country



Age	
18 - 29 years	61,9%
30 - 45 years	30,5%
46 - 55 years	6,4%
+56 years	1,2%
Sex	
Men	76,1%
Women	24,4%

You can access the full report at www.elbarometro.org and www.odisef.org

Q* Quarters of 2025.

DIGITAL WORLD

ANALOG WORLD

DISCRIMINATION AND VIOLENCE Direct temporal connection

Q1 - Football narratives that escalated into insults and dehumanization of migrant populations. (Context: World Cup Qualifiers)

Conversation increased by **696%**

Q2 - Security and violence narratives suggesting "national killers should eliminate foreign ones"

Conversation increased by **1.802%**

Q3 - Police and profiling narratives linking migration to insecurity.

Conversation increased by **343%**

HEALTH STIGMATIZATION Independent narrative trend

Q2 - Narratives linking migrant women to HIV transmission

Conversation increased by **100%**

The peak of exclusion in public spaces (**18.1%** reported by returnees) coincides with "social hygiene" and "sanitary collapse" discourses that seek to justify the segregation of migrants.


MOST REPORTED AGGRESSIONS BY RETURNEES:

Mockery and insults: 

56% Q2 62,5% Q3

Physical violence: 

31,8% Q1 23,4% Q3

"Go back to Venezuela": 

54,7% Q2

Exclusion from public spaces: 

18,8% Q3

Main aggressors:

- Public officials
- Security agents
- Residents

EMPLOYMENT REJECTION Indirect temporal connection

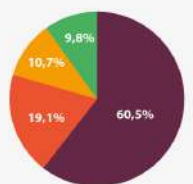
Returnees were denied jobs mainly for "being migrants or foreigners":



Lack of documentation was another reason for job denials. This points to challenges in migrant regularization for effective integration.

GLOBAL CHARACTERIZATION DATA:

Returns by country



Age

18 - 29 years	61,9%
30 - 45 years	30,5%
46 - 55 years	6,4%
+56 years	1,2%

Sex

Men	76,1%
Women	24,4%

You can access the full report at www.elbarometro.org and www.odisef.org

Q* Quarters of 2025.